

## West Aquarius

The West Aquarius is a 6th generation ultra-deepwater offline activity harsh environment semi-submersible with operational history in Southeast Asia and Canada.



### GENERAL (U.S.)

Built	2008 DSME, South Korea
Design	GVA 7500
Flag/Class	Panama / DNV
Dimensions	383 ft x 314 ft
Draft	32.5 ft (transit) 75.4 ft (operating)
Displacement	60,500 st (operating)
Variable Load	5,500 st (transit) 7,150 st (drilling)
Accommodations	180
Helideck	Sikorsky S92, 14.3 st
Max. Water Depth	10,000 ft design
Max. Drilling Depth	34,500 ft

### STATION KEEPING

Dynamic Positioning	DYNPOS AUTRO, POSMOOR ATA
Thrusters	8 x Rolls Royce 4,600 hp
Transit Speed	Up to 6 kn
Mooring Lines	5,500 ft 3.25 in NV R5
Mooring Winches	Pusnes 4 x double 247 st

### STORAGE CAPACITIES

Fuel	21,000 bbl
Drill Water	16,300 bbl
Potable Water	3,150 bbl
Active Liquid Mud	5,100 bbl
Reserve Liquid Mud	11,300 bbl
Bulk Bentonite / Barite	21,800 ft <sup>3</sup>
Bulk Cement	9,800 ft <sup>3</sup>

### DRILLING PACKAGE

Derrick	1,000 st
Top Drive	DDM 1000 AC-2M 1,000 st
Drawworks	Wirth GH 4500 4,500 hp 1,000 st
Rotary Table	Wirth RTSS 60.5 in
Compensator	HMH CMC 1,000 st
Tubular Handling	HMH Vertical Pipe Handler
Mud Pumps	4 x Wirth TPK 2,200 hp
HP Mud System	7,500 psi
Shale Shakers	6 x Swaco BEM 650

### SUBSEA EQUIPMENT

BOP	Cameron TL 5 ram 15,000psi 18-3/4in
Annular	2 x Cameron DL 10,000 psi 18-3/4 in
Diverter	Hydril 21 in
Wellhead Connector	Vetco SHD H4 18-3/4 in
Riser	Cameron LK3.5 75 ft
MPD	Not outfitted
Tensioners	6 x HMH DAT 1,800 st

### CRANES

Primary Cranes	2 x Liebherr 88 st
X-mas Tree Crane	HMH gantry crane 220 st

### POWER

Main Engines	8 x Wartsila 6,300 hp
Main Generators	8 x ABB 6,100 hp
Emergency Power	Main engines

## West Aquarius

The West Aquarius is a 6th generation ultra-deepwater offline activity harsh environment semi-submersible with operational history in Southeast Asia and Canada.



### GENERAL (METRIC)

Built	2008 DSME, South Korea
Design	GVA 7500
Flag/Class	Panama / DNV
Dimensions	117 m x 96 m
Draft	9.9 m (transit) 23 m (operating)
Displacement	55,000 mt (operating)
Variable Load	5,000 mt (transit) 6,500 mt (drilling)
Accommodations	180
Helideck	Sikorsky S92, 13 mT
Max. Water Depth	3,050 m design
Max. Drilling Depth	10,500 m

### STATION KEEPING

Dynamic Positioning	DYNPOS AUTRO, POSMOOR ATA
Thrusters	6 x Rolls Royce 3,500 kW
Transit Speed	Up to 2.9 m/s
Mooring Lines	1,700 m 84 mm NV R5
Mooring Winches	Pusnes 4 x double 225 mt

### STORAGE CAPACITIES

Fuel	3,300 m <sup>3</sup>
Drill Water	2,600 m <sup>3</sup>
Potable Water	500 m <sup>3</sup>
Active Liquid Mud	820 m <sup>3</sup>
Reserve Liquid Mud	1,800 m <sup>3</sup>
Bulk Bentonite / Barite	620 m <sup>3</sup>
Bulk Cement	280 m <sup>3</sup>

### DRILLING PACKAGE

Derrick	907 mt
Top Drive	DDM 1000 AC-2M 907 mt
Drawworks	Wirth GH 4500 3,420 kW 907 mt
Rotary Table	Wirth RTSS 1.5 m
Compensator	HMH CMC 907 mt
Tubular Handling	HMH Vertical Pipe Handler
Mud Pumps	4 x Wirth TPK 1,640 kW
HP Mud System	517 bar
Shale Shakers	6 x Swaco BEM 650

### SUBSEA EQUIPMENT

BOP	Cameron TL 5 ram 1,034 bar 47.6 cm
Annular	2 x Cameron DL 690 bar 47.6 cm
Diverter	Hydril 54 cm
Wellhead Connector	Vetco SHD H4 47.6 cm
Riser	Cameron LK3.5 22.8 m
MPD	Not outfitted
Tensioners	6 x HMH DAT 1,635 mt

### CRANES

Primary Cranes	2 x Liebherr 80 mt
X-mas Tree Crane	HMH gantry crane 200 mt

### POWER

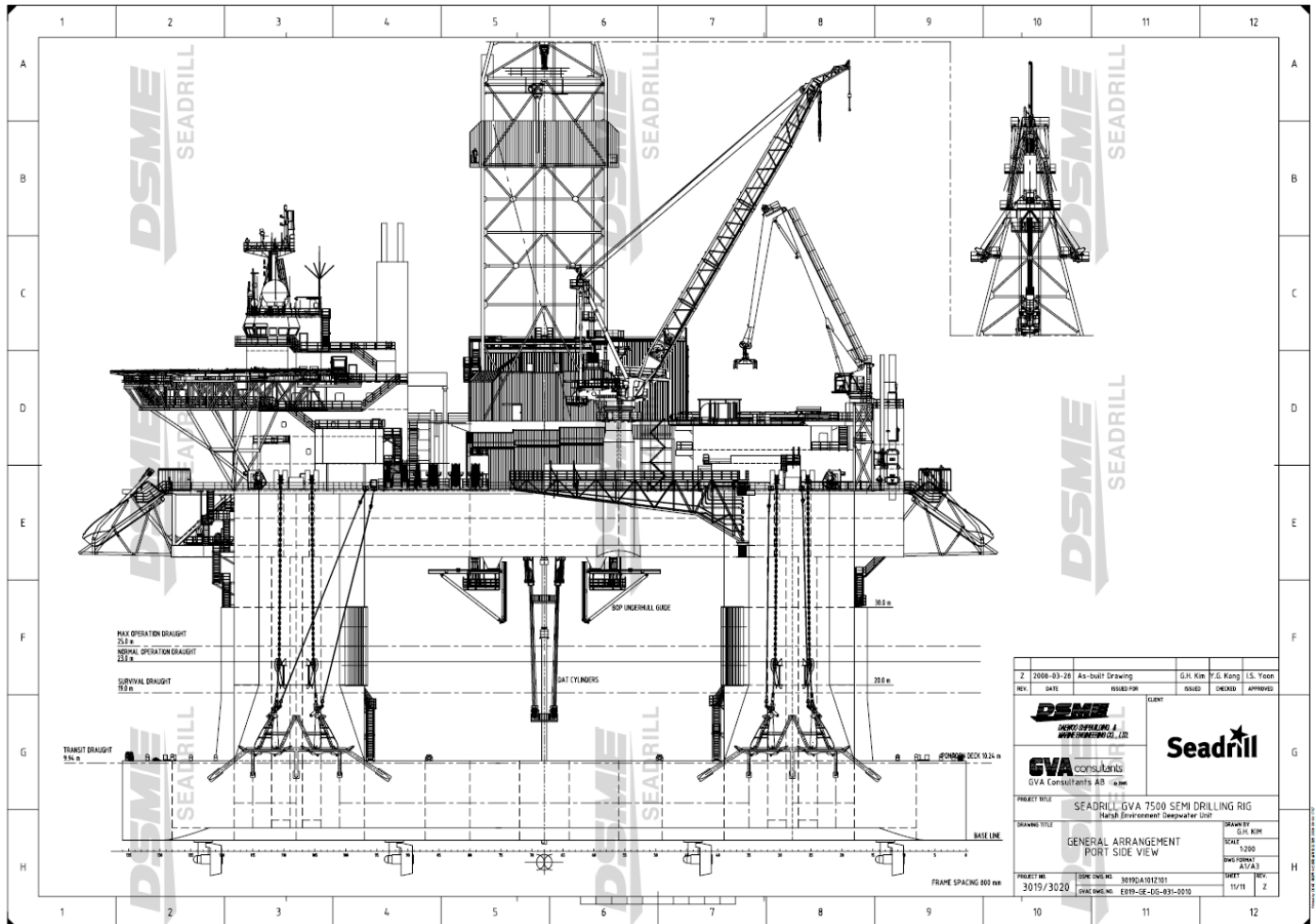
Main Engines	8 x Wartsila 4,750 kW
Main Generators	8 x ABB 4,700 kW
Emergency Power	Main engines

## West Aquarius

The West Aquarius is a 6th generation ultra-deepwater offline activity harsh environment semi-submersible with operational history in Southeast Asia and Canada.



West Aquarius – Side View



## West Aquarius

The West Aquarius is a 6th generation ultra-deepwater offline activity harsh environment semi-submersible with operational history in Southeast Asia and Canada.



West Aquarius – Top View

