

## West Gemini

The West Gemini is a 6th generation ultra-deepwater drillship with operational history offshore Africa.



### GENERAL (U.S.)

Built	2010 Samsung Heavy Industries
Design	Samsung 10,000
Flag/Class	Panama / ABS
Dimensions	748 ft Long / 137.8 ft Wide
Draft	39.4 ft Drilling / 27.9 ft Transit
Displacement	106,233 st Drilling / 73,594 st Transit
Variable Load	22,040 st Drilling / 18,183 st Transit
Accommodations	200 Persons
Helideck	Chinook
Max. Water Depth	10,000 ft Designed / 7,000 ft Outfitted
Max. Drilling Depth	40,000 ft Designed / 37,500 ft outfitted

### STATION KEEPING

Dynamic Positioning	Kongsberg Class 3
Thrusters	6 x Rolls Royce Aquamaster 6,118 HP Azimuthing
Transit Speed	Up to 11.5 Knots
Mooring Lines	Harbor Mooring Only
Mooring Winches	Harbor Mooring Only

### STORAGE CAPACITIES

Fuel	33,738 bbl
Drill Water	17,600 bbl
Potable Water	9,126 bbl
Active Liquid Mud	7,250 bbl
Reserve Liquid Mud	6,300 bbl
Bulk Bentonite / Barite	12,768 ft <sup>3</sup>
Bulk Cement	12,966 ft <sup>3</sup>
Sack Storage	33,738 bbl

### DRILLING PACKAGE

Derrick	Dual NOV 200 ft Tall with 80 ft x 60 ft Base 1,000 = 1,000 st Gross Nominal Capacity
Top Drive	2 x NOV HPS 10002E-ACKT Rated. For 1,000 st Hoisting Capacity 2 x 1,150 HP AC Motors, Max. Continuous Torque 78,450 ft-lbs

Drawworks	2 x NOV SSGD1000, 2" Drill Line Max. Line Pull 14 Lines of 2,000,000 lbs
Rotary Table	2 x VARCO RST 60.5"
Compensator	2 x NOV Crown Mounted Rated for 500 st Compensated, 1,000 st Static
Tubular Handling	NOV Automated Hydraracker
Mud Pumps	4 x NOV 14-P-220, 5-9" Liners, 2,200 HP
HP Mud System	Rated for 7,500 psi
Shale Shakers	6 x NOV VSM 300

### SUBSEA EQUIPMENT

BOP	Shaffer 18 3/4" 6 RAM NXT 15,000 psi
Annular	2 x Shaffer 18 3/4" 10,000 psi
Diverter	Shaffer Max. Bore 21-1/4"
Wellhead Connector	Vetco 15K, H4 Profile Dressed for 18 3/4" Wellhead
Riser	Shaffer ft-h 90 ft Length 21" OD, 4" ID Boost Line
Tensioners	8 x Dual Shaffer Wire Tensioners 200 st Capacity EA, 50 ft Line Travel

### CRANES

Primary Cranes	4 x NOV Hydralift Knuckle Boom Rated for 93.6 st at 62.3 ft Radius
----------------	--

### POWER

Main Engines	6 x MAN/STX 16V32 10,728 HP Diesel Engines
Main Generators	6 x ABB 10,728 HP @ 0.8 P.F.
Emergency Power	1 x MTU 2,175 HP Diesel Engine 1 x Leroy Somer 1,350 kW Generator @ 0.8 P.F.

## West Gemini

The West Gemini is a 6th generation ultra-deepwater drillship with operational history offshore Africa.



### GENERAL (METRIC)

Built	2010 Samsung Heavy Industries
Design	Samsung 10,000
Flag/Class	Panama / ABS
Dimensions	228 m Long / 42 m Wide
Draft	12 m Drilling / 8.5 m Transit
Displacement	96,400 mt Drilling / 66,782 mt Transit
Variable Load	20,000 mt Drilling / 16,500 mt Transit
Accommodations	200 Persons
Helideck	Chinook
Max. Water Depth	3,048 m Designed / 2,134 m Outfitted
Max. Drilling Depth	12,192 m Designed / 11,429 m Outfitted

### STATION KEEPING

Dynamic Positioning	Kongsberg DP Class 3
Thrusters	6 x Rolls Royce Aquamaster 4,562 kW Azimuthing Up to 5.9 m/s
Transit Speed	Harbor Mooring Only
Mooring Lines	Harbor Mooring Only
Mooring Winches	Kongsberg DP Class 3

### STORAGE CAPACITIES

Fuel	5,364 m <sup>3</sup>
Drill Water	2,798 m <sup>3</sup>
Potable Water	1,452 m <sup>3</sup>
Active Liquid Mud	1,152 m <sup>3</sup>
Reserve Liquid Mud	1,008 m <sup>3</sup>
Bulk Bentonite / Barite	452 m <sup>3</sup>
Bulk Cement	452 m <sup>3</sup>
Sack Storage	5,364 m <sup>3</sup>

### DRILLING PACKAGE

Derrick	Dual NOV 61 m Tall with 24.4 m x 18.3 m Base 907 + 907 mt Gross Nominal Capacity
Top Drive	2 x NOV HPS 1000 Rated for 907 mt Hoisting Capacity, 2 x 860 kW AC Motors, Max. Continuous Torque 106,364 nm

Drawworks	2 x NOV Dreco SSGD1000. 50.8 mm Drill Max. Line Pull 14 Lines of 907 mt
Rotary Table	2 x VARCO RST 153 cm
Compensator	2 x NOV Crown Mounted Rated for 454 mt Compensated, 907 mt Static
Tubular Handling	NOV Automated Hydraracker NOV 14-P-220 x, 12.70-22.86 cm Liners, 1,640 kW Rated for 517 Bar
Mud Pumps	6 x NOV VSM 300
HP Mud System	2 x NOV Dreco SSGD1000. 50.8 mm Drill Line Max. Line Pull 14 Lines of 907 mt
Shale Shakers	2 x VARCO RST 153 cm

### SUBSEA EQUIPMENT

BOP	NOV 47.625 cm 6 RAM NXT 1,034 Bar 2 x Shaffer DL 47.625 cm 689 Bar
Annular	Shaffer Max. Bore 53.9cm
Diverter	Vetco 15K, H4 Profile Dressed for 46.54 cm Wellhead
Wellhead Connector	Shaffer ft-h 27.43 m Length 0.5334 m OD 10.16 ID Boost Line
Riser	8 x Dual Shaffer Wire Tensioners 91 mt Capacity EA, 15.24 m Line Travel
Tensioners	NOV 47.625 cm 6 RAM NXT 1,034 Bar 2 x Shaffer DL 47.625 cm 689 Bar

### CRANES

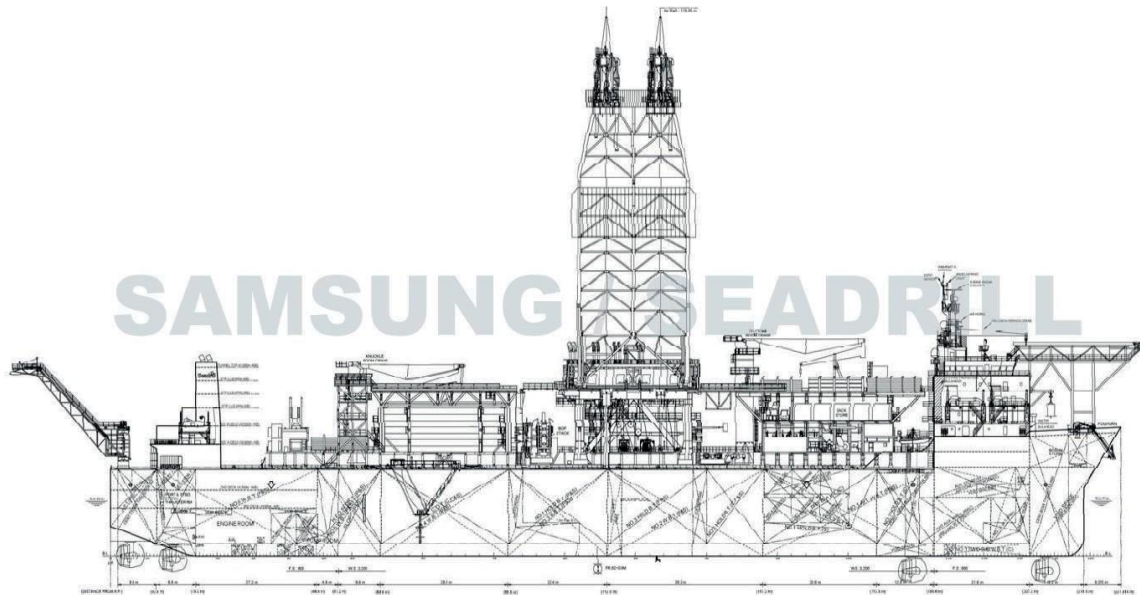
Primary Cranes	4 x NOV Hydralift Knuckle Boom Rated for 85 mt At 19 m Radius
----------------	---

### POWER

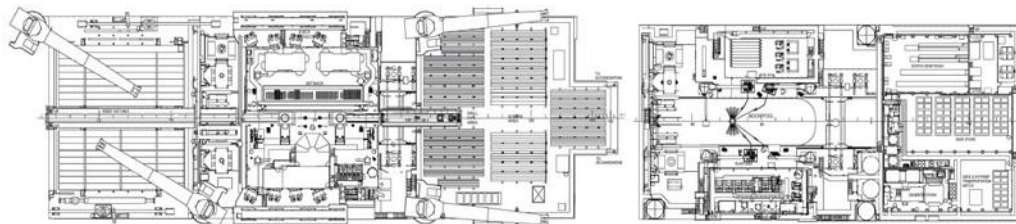
Main Engines	6 x STX-MAN 16V32/40 8,000 kW Diesel Engines
Main Generators	6 x ABB 7,000 kW @ 0.8 P.F.
Emergency Power	1 x MTU 1,600 kW Diesel Engine 1 x Leroy Somer 1,350 kW Generator @ 0.8 P.F.

## West Gemini

The West Gemini is a 6th generation ultra-deepwater drillship with operational history offshore Africa.

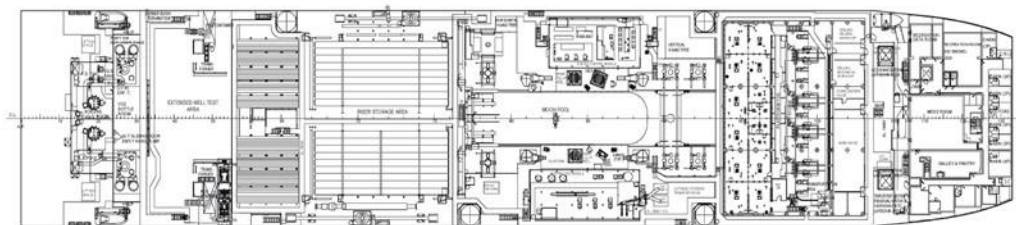


PROFILE



36.0 M A/B PLAN

30.000 M A/B PLAN



23.0 M A/B PLAN