

WEST SATURN

The West Saturn is a 6th generation ultra-deepwater drillship with operational history offshore Africa.



GENERAL (U.S)

Built	2014 Samsung Heavy Industries
Design	Samsung 12,000
Flag/Class	Panama / ABS
Dimensions	748 ft Long / 137.8 ft Wide
Draft	39.4 ft Drilling / 27.9 ft Transit
Displacement	106,087 st Drilling / 73,881 st Transit
Variable Load	22,046 st Drilling / 18,188 st Transit
Accommodations	200 Persons
Helideck	Sikorsky S61N & S92
Max. Water Depth	12,000 ft Designed / 9,900 ft Outfitted
Max. Drilling Depth	37,500 ft

STATION KEEPING

Dynamic Positioning	Kongsberg DP Class 3
Thrusters	6 x Rolls Royce 6,035 HP Azimuthing
Transit Speed	Up to 11.5 Knots
Mooring Lines	Harbor Mooring Only
Mooring Winches	Harbor Mooring Only

STORAGE CAPACITIES

Fuel	37,793 bbl
Drill Water	15,362 bbl
Potable Water	9,132 bbl
Active Liquid Mud	6,544 bbl
Reserve Liquid Mud	9,435 bbl
Bulk Bentonite / Barite	15,962 ft ³
Bulk Cement	15,962 ft ³
Sack Storage	7,000 Sacks

DRILLING PACKAGE

Derrick	Dual NOV 210 ft Tall with 80 ft x 60 ft Base 1,250 + 1,000 St Gross Nominal Capacity
Top Drive	1 x Main + 1 x Aux NOV TDX 1250 Rated for 1,250 st Hoisting Capacity, 2 x 1,340 HP AC Motors, Max. Continuous Torque 105,000 ft-lbs at 125 RPM

Drawworks	Main: NOV Dresco w/ 2" Drill Line Max. Line Pull 16 Lines of 1,250 st Aux: NOV Dresco 2" Drill Line Max. Pull 14 Lines 1,000 st
Rotary Table	Main: VARCO RST 75.5" Aux: VARCO RST 60.5"
Compensator	Main: NOV Crown Mounted Rated for 766 st Compensated, 1,250 st Static
Tubular Handling	NOV Automated Hydraracker
Mud Pumps	4 x NOV 14-P-220 2,200 HP
HP Mud System	Rated for 7,500 psi
Shale Shakers	6 x NOV VSM 300

SUBSEA EQUIPMENT

BOP	NOV 18 3/4" 7 NXT RAM 15,000 psi
Annular	2 x Shaffer 18 3/4" 10,000 psi
Diverter	Shaffer Max. Bore 21-1/4"
Wellhead Connector	Drill-Quip DX-DW Dressed for 27" Wellhead
Riser	Shaffer ft-h 90 ft Length 21" OD, 4" ID Boost Line
Tensioners	8 x Dual Shaffer 112.5 st Capacity EA, 50 ft Line Travel

CRANES

Primary Cranes	3 x NOV Hydralift Knuckle Boom Rated for 93.6 st at 62.3 ft Radius
X-Mas Tree Handling	NOV Heave Compensated Knuckle Boom Rated for 181.9 st at 59 ft Radius

POWER

Main Engines	6 x Himsen 16H32/40V 10,877 HP Diesel Engines
Main Generators	6 x ABB 9,387 HP @ 0.8 P.F
Emergency Power	1 x MTU 2,145 HP Diesel Engine 1 x Leroy Somer 1,350 kW Generator @ 0.8 P.F

Further information: +47 51 30 90 00 – www.seadrill.com

The above information is intended for general reference only. All equipment and specifications are subject to change at any time. Revised 27 June 2016.

WEST SATURN

The West Saturn is a 6th generation ultra-deepwater drillship with operational history offshore Africa.



GENERAL (METRIC)

Built	2014 Samsung Heavy Industries
Design	Samsung 12,000
Flag/Class	Panama / ABS
Dimensions	228 m Long / 42 m Wide
Draft	12 m Drilling / 8.5 ft Transit
Displacement	96,241 mt Drilling / 66,369 mt Transit
Variable Load	20,000 mt Drilling / 16,500 mt Transit
Accommodations	200 Persons
Helideck	Sikorsky S92 / MIL-MI-8
Max. Water Depth	3,657 m Designed / 3,135 m Outfitted
Max. Drilling Depth	11,429 m

STATION KEEPING

Dynamic Positioning	Kongsberg DP Class 3
Thrusters	6 x Rolls Royce 4,500 kW Azimuthing
Transit Speed	Up to 5.9 m/s
Mooring Lines	Harbor Mooring Only
Mooring Winches	Harbor Mooring Only

STORAGE CAPACITIES

Fuel	6,009 m ³
Drill Water	2,442 m ³
Potable Water	1,452 m ³
Active Liquid Mud	1,040 m ³
Reserve Liquid Mud	1,500 m ³
Bulk Bentonite / Barite	452 m ³
Bulk Cement	452 m ³
Sack Storage	7,000 Sacks

DRILLING PACKAGE

Derrick	Dual NOV 64 m Tall with 24.4 m x 18.3 m Base 1,134 + 901 mt Gross Nominal Capacity
Top Drive	1 x Main + 1 x Aux NOV TDX 1250 Rated for 1,134 mt Hoisting Capacity, 2 x 999 kW AC Motors, Max. Continuous Torque 142,360 nm at 125 RPM

Drawworks	Main: NOV Drecto 50.8 Drill Line Max. Line Pull 16 Lines of 1,134 mt Aux: NOV Drecto 2" Drill Line Max. Pull 14 Lines 907 mt
Rotary Table	Main: VARCO RST 1.917 m Aux: VARCO RST .536 m
Compensator	Main: NOV Crown Mounted Rated for 695 mt Compensated, 1,134 mt Static
Tubular Handling	NOV Automated Hydraracker
Mud Pumps	4 x NOV 14-P-220 1,640 kW
HP Mud System	Rated for 517 bar
Shale Shakers	6 x NOV VSM 300

SUBSEA EQUIPMENT

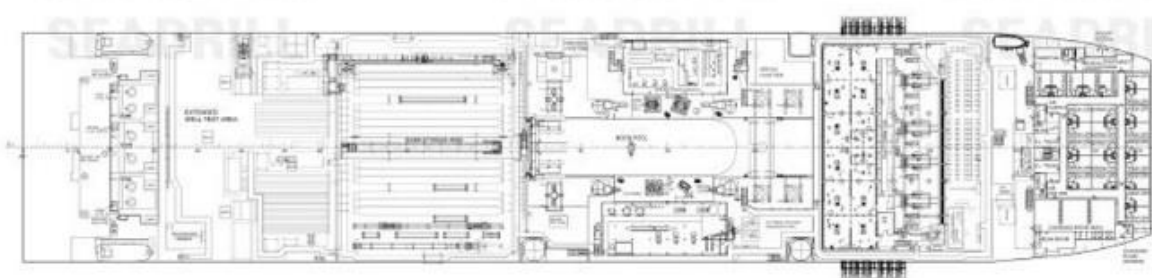
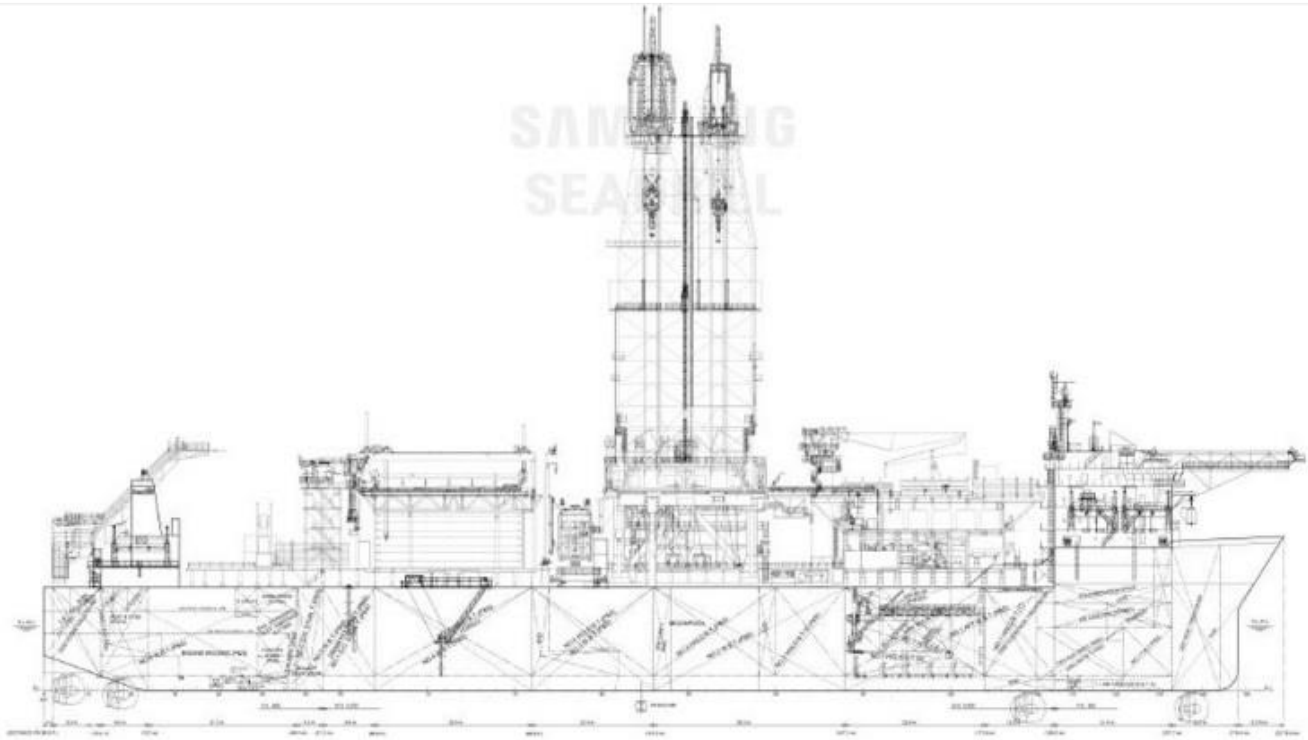
BOP	NOV 47.625 cm 7 NXT RAM 1,034 bar
Annular	2 x Shaffer 47.625 cm 689 bar
Diverter	Shaffer Max. Bore 53.975 cm
Wellhead Connector	Drill-Quip DX-DW Dressed for 68.58 cm Wellhead
Riser	Shaffer 27.43 m Length 0.5334 m OD 10.16 cm ID Boost Line
Tensioners	8 x Dual Shaffer 102 mt Capacity EA, 15.24 m Line Travel

CRANES

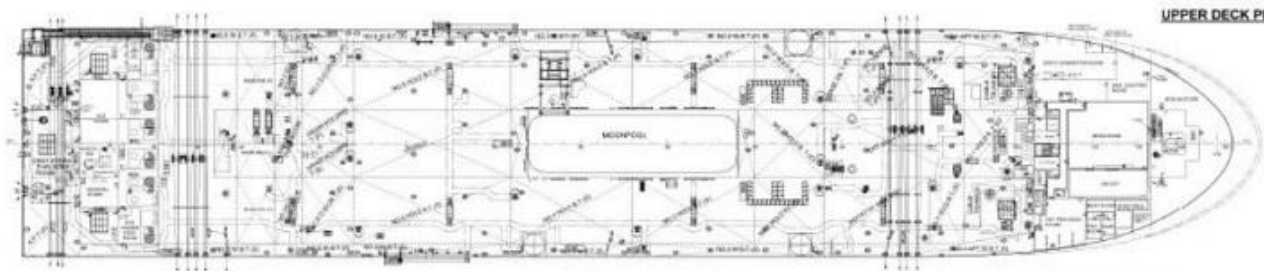
Primary Cranes	3 x NOV Hydralift Knuckle Boom Rated for 165 mt at 19 m Radius
X-Mas Tree Handling	NOV Heave Compensated Knuckle Boom Rated for 165 mt at 18 m Radius

POWER

Main Engines	6 x Himsen 16H32/40V 8,000 kW Diesel Engines
Main Generators	6 x ABB 7,000 kW @ 0.8 P.F
Emergency Power	1 x MTU 1,600 kW Diesel Engine 1 x Leroy Somer 1,350 kW Generator @ 0.8 P.F



23.0 M A/B PLAN
("A" DECK PLAN)



UPPER DECK PLAN