

WEST POLARIS

The West Polaris is a 6th generation ultra-deepwater Drillship with operational history offshore Brazil and Africa.



GENERAL (U.S.)

Built	2008 Samsung Heavy Industries
Design	Samsung 10,000
Flag/Class	Panama / ABS
Dimensions	748 ft Long / 137.8 ft Wide
Draft	39.4 ft Drilling / 27.9 ft Transit
Displacement	106,233 st Drilling / 73,696 st Transit
Variable Load	22,047 st Drilling / 18,188 st Transit
Accommodations	180 Persons
Helideck	BV-234 Chinook
Max. Water Depth	10,000 ft Designed / 10,000 ft Outfitted
Max. Drilling Depth	37,500 ft8

STATION KEEPING

Dynamic Positioning	Kongsberg DP Class 3
Thrusters	6 x Rolls Royce Aquamaster 6,035 HP Azimuthing
Transit Speed	Up to 11.5 Knots
Mooring Lines	Harbor Mooring Only
Mooring Winches	Harbor Mooring Only

STORAGE CAPACITIES

Fuel	42,670 bbl
Drill Water	18,000 bbl
Potable Water	8,812 bbl
Active Liquid Mud	6,534 bbl
Reserve Liquid Mud	6,314 bbl
Bulk Bentonite / Barite	15,962 ft ³
Bulk Cement	15,962 ft ³
Sack Storage	7,000 Sacks

DRILLING PACKAGE

Derrick	Dual NOV 200 ft Tall with 80 ft x 60 ft Base 1,000 + 1,000 st Gross Nominal Capacity
Top Drive	2 x NOV HPS 1000 Rated for 1,000 st Hoisting Capacity, 2 x 1,150 HP AC Motors, Max. Continuous Torque 78,450 ft-lbs

Drawworks	2 x NOV Drecto SSGD1000, 2" Drill Line Max. Line Pull 14 Lines of 2,000,000 lbs
Rotary Table	VARCO RST 60.5"
Compensator	2 x NOV Crown Mounted Rated for 500 st Compensated, 1,000 st Static
Tubular Handling	NOV Automated Hydraracker
Mud Pumps	4 x NOV 14-P-220, 5-9" Liners, 2,200 HP
HP Mud System	Rated for 7,500 psi
Shale Shakers	6 x NOV VSM 300

SUBSEA EQUIPMENT

BOP	NOV 18 3/4" 6 RAM NXT 15,000 psi
Annular	2 x Shaffer 18 3/4" 10,000 psi
Diverter	Shaffer Max. Bore 21-1/4"
Wellhead Connector	VETCO SHD, H4 Profile Dressed For 27" Wellhead
Riser	Shaffer ft-h 90 ft Length 21" OD, 4" ID Boost Line
Tensioners	8 x Dual Shaffer Wire Tensioners 100 st Capacity EA, 50 ft Line Travel

CRANES

Primary Cranes	4 x NOV Hydralift Knuckle Boom Rated for 93.6 st at 62.3 ft Radius
----------------	--------------------------------------------------------------------

POWER

Main Engines	6 x Wartsila 16V32 9,775 HP Diesel Engines
Main Generators	6 x ABB 9,387 HP @ 0.8 P.F.
Emergency Power	1 x MTU 2,145 HP Diesel Engine 1 x Leroy Somer 1,300 kW Generator @ 0.8 P.F.

WEST POLARIS

The West Polaris is a 6th generation ultra-deepwater Drillship with operational history offshore Brazil and Africa.



GENERAL (METRIC)

Built	2008 Samsung Heavy Industries
Design	Samsung 10,000
Flag/Class	Panama / ABS
Dimensions	228 m Long / 42 m Wide
Draft	12 m Drilling / 8.5 m Transit
Displacement	96,400 mt Drilling / 66,997 mt Transit
Variable Load	20,000 mt Drilling / 16,500 mt Transit
Accommodations	180 Persons
Helideck	BV-234 Chinook
Max. Water Depth	3,048 M Designed / 3,048 m Outfitted
Max. Drilling Depth	11,433 m

STATION KEEPING

Dynamic Positioning	Kongsberg DP Class 3
Thrusters	6 x Rolls Royce Aquamaster 4,500 kW Azimuthing
Transit Speed	Up to 5.9 M/S
Mooring Lines	Harbor Mooring Only
Mooring Winches	Harbor Mooring Only

STORAGE CAPACITIES

Fuel	6,785 m ³
Drill Water	2,869 m ³
Potable Water	1,401 m ³
Active Liquid Mud	1,039 m ³
Reserve Liquid Mud	1,004 m ³
Bulk Bentonite / Barite	452 m ³
Bulk Cement	452 m ³
Sack Storage	7,000 Sacks

DRILLING PACKAGE

Derrick	Dual NOV 61 m Tall with 24.4 m x 18.3 m Base 907 + 907 mt Gross Nominal Capacity
Top Drive	2 x NOV HPS 1000 Rated for 907 mt Hoisting Capacity, 2 x 860 kW AC Motors, Max. Continuous Torque 106,364 nm

Drawworks	2 x NOV Dresco SSGD1000. 50.8 mm Drill Line Max. Line Pull 14 Lines of 907 mt
Rotary Table	VARCO RST 605
Compensator	2 x NOV Crown Mounted Rated for 454 mt Compensated, 907 mt Static
Tubular Handling	NOV Automated Hydraracker
Mud Pumps	4 x NOV 14-P-220, 12.70-22.86 cm Liners, 1,640 kW
HP Mud System	Rated for 517 Bar
Shale Shakers	6 x NOV VSM 300

SUBSEA EQUIPMENT

BOP	NOV 47.625 cm 6 RAM NXT 1,034 Bar
Annular	2 X Shaffer DL 47.625 cm 689 Bar
Diverter	Shaffer Max. Bore 0.53975m
Wellhead Connector	VETCO SHD H4 Profile Dressed for 68.54 cm Wellhead
Riser	Shaffer ft-h 27.43 m Length 0.5334 m OD 10.16 ID Boost Line
Tensioners	8 x Dual Shaffer Wire Tensioners 91 mt Capacity EA, 15.24 m Line Travel

CRANES

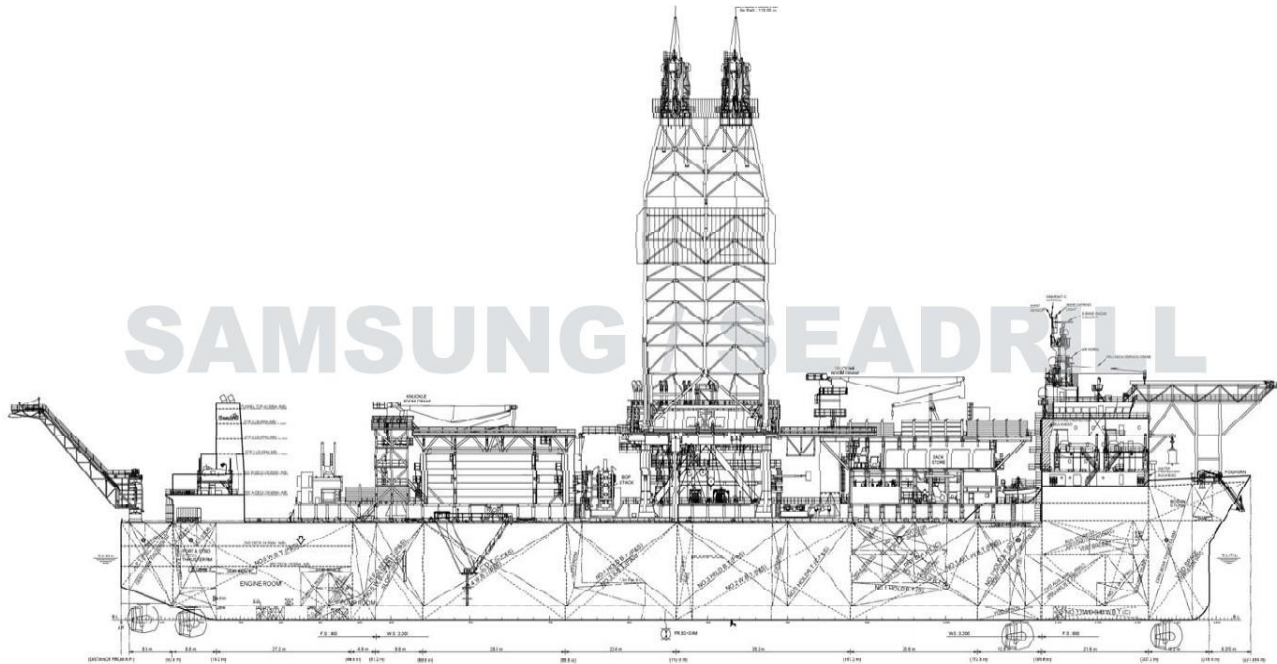
Primary Cranes	4 x NOV Hydralift Knuckle Boom Rated for 85 mt at 19 m Radius
----------------	---------------------------------------------------------------

POWER

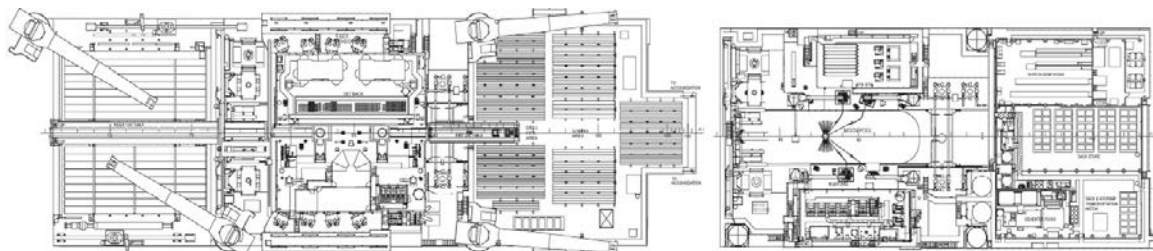
Main Engines	6 x Wartsila 16V32 7,290 kW Diesel Engines
Main Generators	6 x ABB 7,000 kW @ 0.8 P.F.
Emergency Power	1 x MTU 1,600 kW Diesel Engine 1 x Leroy Somer 1,300 kW Generator @ 0.8 P.F

WEST POLARIS

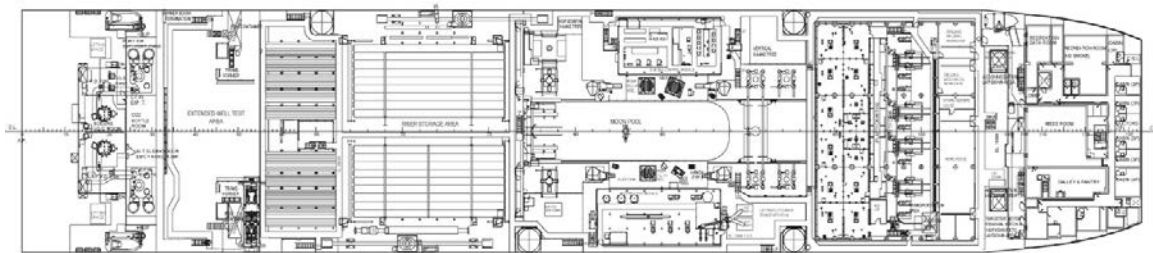
The West Polaris is a 6th generation ultra-deepwater Drillship with operational history offshore Brazil and Africa.



PROFILE



SAMSUNG / SEADRILL



23.0 M A/B PLAN

Further information: +47 51 30 90 00 – www.seadrill.com

The above information is intended for general reference only. All equipment and specifications are subject to change at any time. Revised October 2018.