

## WEST CAPELLA

The West Capella is a 6th generation ultra-Deepwater Drillship with operational history offshore Africa and Asia.



### GENERAL (U.S.)

Built	2008 Samsung Heavy Industries
Design	Samsung 10,000
Flag/Class	Panama / ABS
Dimensions	748 ft Long / 137.8 ft Wide
Draft	39.4 ft Drilling / 27.9 ft Transit
Displacement	106,289 st Drilling / 73,853 st Transit
Variable Load	22,047 st Drilling / 18,188 st Transit
Accommodations	180 Persons
Helideck	BV-234 Chinook (21.3t)
Max. Drilling Depth	10,000 ft Designed / 10,000 ft Outfitted
Max. Water Depth	37,500 ft

### STATION KEEPING

Dynamic Positioning	Kongsberg Class 3
Thrusters	6 x Rolls Royce Aquamaster 6,035 HP Azimuthing
Transit Speed	Up to 11.5 Knots
Mooring Lines	Harbor Mooring Only
Mooring Winches	Harbor Mooring Only

### STORAGE CAPACITIES

Fuel	39,097 bbl
Drill Water	18,071 bbl
Potable Water	9,132 bbl
Active Liquid Mud	6,635 bbl
Reserve Liquid Mud	6,338 bbl
Bulk Bentonite / Barite	15,962 ft3
Bulk Cement	15,962 ft3
Sack Storage	5,000 Sacks

### DRILLING PACKAGE

Derrick	Dual NOV 200 ft Tall with 80 ft x 60 ft Base 1,000 + 1,000 st Gross Nominal Capacity
---------	--

Top Drive	2 x NOV HPS 1000 Rated for 1,000 St Hoisting Capacity, 2 x 1,150 HP AC Motors, Max. Continuous Torque 78,450 ft-lbs
Drawworks	2 x NOV Drecto SSGD1000, 2" Drill Line Max. Line Pull 14 Lines of 2,000,000 lbs
Rotary Table	VARCO RST 60.5"
Tubular Handling	2 x NOV Crown Mounted Rated for 500 st Compensated, 1,000 st Static with Active heave
Power Slips	2 NOV Automated Hydraracker IV
Mud Pumps	4 x NOV 14-P-220 2,200 HP
HP Mud System	Rated for 7,500 psi
Shale Shakers	6 x NOV VSM 300

### SUBSEA EQUIPMENT

BOP	NOV 18 3/4" 6 RAM NXT 15,000 psi
Annular	2 x Shaffer 18 3/4" 10,000 psi
Diverter	Shaffer Max. Bore 21-1/4"
Wellhead Connector	Drill-Quip DX DW H4 Profile Dressed for 27" Wellhead
Riser	Shaffer ft-h 90 Ft Length 21" OD, 4" ID Boost Line
MPD	MPD Equipped and certified
Tensioners	8 x Dual Shaffer Wire Tensioners 100 St Capacity EA, 50 ft Line Travel

### CRANES

Primary Cranes	4 x NOV Hydralift Knuckle Boom Rated for 93.6 st at 59 ft Radius
----------------	--

### POWER

Main Engines	6 x Wartsila 16V32 9,775 HP Diesel Engines
Main Generators	6 x ABB 9,387 HP @ 0.8 P.F.
Emergency Power	1 x MTU 2,145 HP Diesel Engine 1 x Leroy Somer 1,300 kW Generator @ 0.8 P.F.

## WEST CAPELLA

The West Capella is a 6th generation ultra-Deepwater Drillship with operational history offshore Africa and Asia.



### GENERAL (METRIC)

Built	2008 Samsung Heavy Industries
Design	Samsung 10,000
Flag/Class	Panama / ABS
Dimensions	228 m Long / 42 m Wide
Draft	12 m Drilling / 8.5 m Transit
Displacement	96,424 mt Drilling / 66,999 mt Transit
Variable Load	20,000 mt Drilling / 16,500 mt Transit
Accommodations	180 Persons
Helideck	BV-234 Chinook (21.3t)
Max. Drilling Depth	3,048 M Designed / 3,048 m Outfitted
Max. Water Depth	11,433 m

### STATION KEEPING

Dynamic Positioning	Kongsberg Class 3
Thrusters	6 x Rolls Royce Aqua master 4,500 kW Azimuthing
Transit Speed	Up to 5.9 m/s
Mooring Lines	Harbor Mooring Only

### STORAGE CAPACITIES

Fuel	6,785 m3
Drill Water	2,873 m3
Potable Water	1,452 m3
Active Liquid Mud	1,055 m3
Reserve Liquid Mud	1,008 m3
Bulk Bentonite / Barite	452 m3
Bulk Cement	452 m3
Sack Storage	5,000 Sacks

### DRILLING PACKAGE

Derrick	Dual NOV 61 m Tall with 24.4 m x 18.3 m Base 907 + 907 mt Gross Nominal Capacity
---------	--

Top Drive	2 x NOV HPS 1000 Rated for 907 mt Hoisting Capacity, 2 x 860 kW AC Motors, Max. Continuous Torque 106,364 nm
Drawworks	2 x NOV Dresco SSGD1000. 50.8 mm Drill Line Max. Line Pull 14 Lines of 907 mt
Rotary Table	VARCO RST 605
Compensator	2 x NOV Crown Mounted Rated for 454 mt Compensated, 907 mt Static with Active heave
Tubular Handling	2 NOV Automated Hydraracker IV
Mud Pumps	4 x NOV 14-P-220 1,640 kW
HP Mud System	Rated for 517 Bar
Shale Shakers	6 x NOV VSM 300

### SUBSEA EQUIPMENT

BOP	NOV 47.625 cm 6 RAM NXT 1,034 Bar
Annular	2 x Shaffer DL 47.625 cm 689 Bar
Diverter	Shaffer Max. Bore 0.53975 m
Wellhead Connector	Drill-Quip DX DW, H4 Profile Dressed for 68.54 cm Wellhead
Riser	Shaffer ft-h 27.43 m Length 0.5334 m OD 10.16 ID Boost Line
MPD	MPD Equipped and certified
Tensioners	8 x Dual Shaffer Wire Tensioners 91 mt Capacity EA, 15.24 m Line Travel

### CRANES

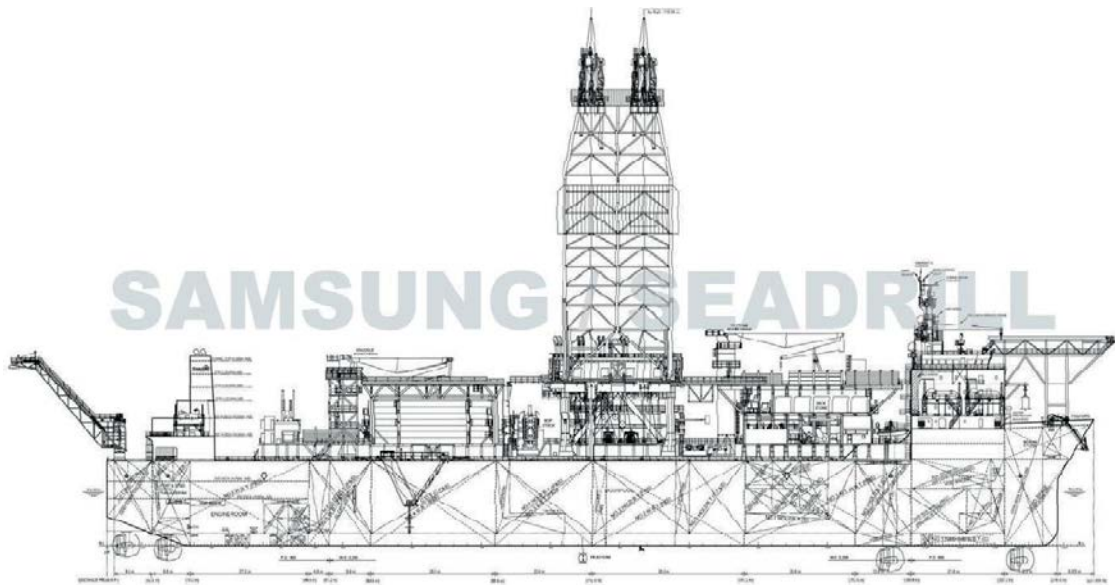
Primary Cranes	4 x NOV Hydralift Knuckle Boom Rated for 85 mt at 18 m Radius
----------------	---

### POWER

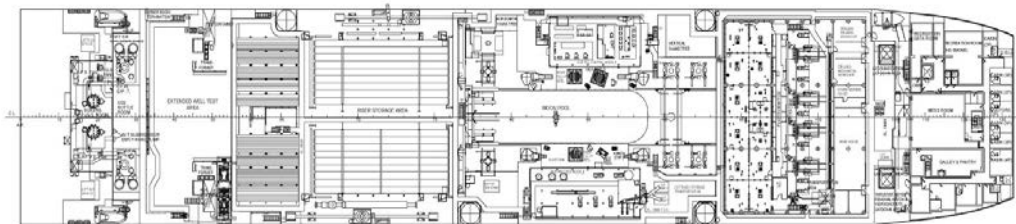
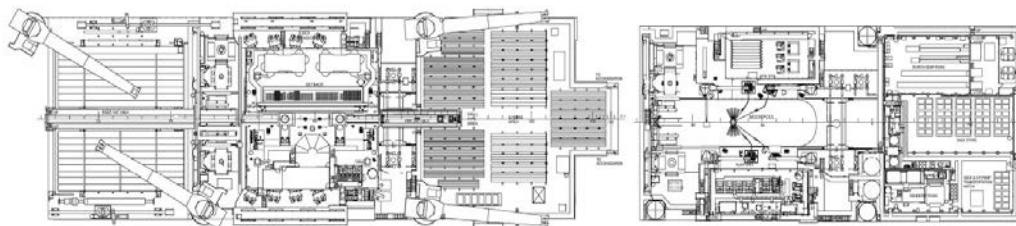
Main Engines	6 x Wartsila 16V32 7,290 kW Diesel Engines
Main Generators	6 x ABB 7,000 kW @ 0.8 P.F.
Emergency Power	1 x MTU 1,600 kW Diesel Engine 1 x Leroy Somer 1,300 kW Generator @ 0.8 P.F.

## WEST CAPELLA

The West Capella is a 6th generation ultra-Deepwater Drillship with operational history offshore Africa and Asia.



PROFILE



25.0 M A/B PLAN