



## West Courageous

The West Courageous is an independent Leg Cantilever Jackup with operational history in the Gulf of Mexico.



### GENERAL (U.S.)

Built	2007 Keppel AmFELS
Design	LeTourneau Super 116 Independent Leg Cantilever
Flag/Class	Singapore / ABS
Helideck	S61N & S92
Accommodations	110 Persons
Dimensions	234 ft Long / 206 ft Wide / 26 ft Deep
Draft	16 ft Transit
Displacement	25,800 st at Loadline
Variable Load	2,217 st Transit / 3,007 st Drilling
Max. Drilling Depth	30,000 ft
Max. Water Depth	Up to 350 ft
Legs	3 x 477 ft Square Truss / 420 ft Useable Below Hull
Leg Spacing	142 ft Transverse / 129 ft Longitudinal
Spudcans	46 ft Diameter
Jacking System	LeTourneau 16 x Pinions/Leg
Mooring Winches	2 x NOV Amclyde JU-36 50 HP 25 st Pull
Mooring Lines	2 x 2,000 ft 1-1/2" Diameter IWRC
Anchors	4 x Flipper Delta 5.51 st

### STORAGE CAPACITIES

Fuel	2,024 bbl
Drill Water	11,300 bbl
Potable Water	1,658 bbl
Active/Reserve Liquid Mud	3,046 bbl
Base Oil	1,124 bbl
Brine	800 bbl
Bulk Bentonite / Barite	6,400 ft <sup>3</sup>
Bulk Cement	4,800 ft <sup>3</sup>
Sack Storage	5,000 Sacks

### DRILLING PACKAGE

Cantilever Envelope	70 ft x 29 ft
---------------------	---------------

Derrick	NOV Drecto 170 ft Tall with 32 ft x 35 ft Base 964 st Gross Nominal Capacity
Top Drive	NOV TDS-8SA Rated for 826.5 st Hoisting Capacity Max. Continuous Torque 62,500 ft-lbs
Drawworks	National 1625 UBDE w/ 1-5/8" Drill Line Max. Line Pull 12 Lines of 862.5 st
Rotary Table	NOV 495, 49.5" Max. Opening
Tubular Handling	NOV st-120 Iron Roughneck
Mud Pumps	3 x LEWCO w-2214, 2,200 HP
HP Mud System	Rated for 7,500 psi
Shale Shakers	4 x Brandt VSM 300

### WELL CONTROL

BOP (LP)	Cameron Type U 21 1/4" X 20 3/4" 3 x RAM 2,000 psi 1 x Shaffer Spherical Annular 21 1/4" 2,000 psi
BOP (HP)	Cameron Type U 13 5/8" 4 x RAM 15,000 PSI 1 x Shaffer Spherical Annular 13 5/8" 10,000 PSI
Diverter	1 x Shaffer Spherical 30" 1,000 psi
BOP Handling	2 x Ingersoll-Rand 82.6 St Hoist
Choke & Kill Manifold	WOM 15,000 psi
Conductor Tensioning	Claxton 4 x Lift Points Total Tension 220.4 st

### CRANES

Primary Cranes	1 x LeTourneau PCM120ss 120 ft Boom Rated for 41.6 st at 25 ft Radius, Port FWD 2 x LeTourneau PCM120ss 100 ft Boom Rated for 49.2 st at 22 ft Radius, Port AFT, STBD AFT
Xmas Tree Handling	2 x Ingersoll-Rand 82.6 st Hoist

### POWER

Main Engines	4 x Caterpillar 3516B HD 2,150 HP Diesel Engines
Main Generators	4 x Baylor 2,011 HP
Emergency Power	1 x Caterpillar 3516B HD 2,150 HP Diesel Engine (Separate From 4 Main Engines)

Further information: +47 51 30 90 00 – [www.seadrill.com](http://www.seadrill.com)

The above information is intended for general reference only. All equipment and specifications are subject to change at any time. Revised October 2018.

## West Courageous

The West Courageous is an independent Leg Cantilever Jackup with operational history in the Gulf of Mexico.



### GENERAL (METRIC)

Built	20\07 Keppel AmFELS
Design	LeTourneau Super 116 Independent Leg Cantilever
Flag/Class	Singapore / ABS
Helideck	S61N & S92
Accommodations	110 Persons
Dimensions	71.3 m Long / 62.8 m Wide / 7.9 m Deep
Draft	4.9 m Transit
Displacement	23,412 mt at Loadline
Variable Load	2,012 mt Transit / 2,729 mt Drilling
Max. Drilling Depth	9,144 m
Max. Water Depth	Up to 106.7 m
Legs	3 x 145.4 m Square Truss / 128 m Useable Below Hull
Leg Spacing	43.3 m Transverse / 39.3 m Longitudinal
Spudcans	14 m Diameter
Jacking System	LeTourneau 16 x Pinions/Leg
Mooring Winches	2 x NOV Amclyde JU-36 67 kW 22.7 mt Pull
Mooring Lines	2 x 609.6 m 38.1 mm Diameter IWRC
Anchors	4 x Flipper Delta 5 mt

### STORAGE CAPACITIES

Fuel	322 m3
Drill Water	1,797 m3
Potable Water	264 m3
Active/Reserve Liquid Mud	484 m3
Base Oil	179 m3
Brine	127 m3
Bulk Bentonite / Barite	181 m3
Bulk Cement	136 m3
Sack Storage	5,000 Sacks

### DRILLING PACKAGE

Cantilever Envelope	21.3 m x 8.8 m
---------------------	----------------

Derrick	NOV Dreco 52 m Tall with 9.8 m x 10.7 m Base 875 mt Gross Nominal Capacity
Top Drive	NOV TDS-8SA Rated for 750 mt Hoisting Capacity Max. Continuous Torque 84,739 nm
Drawworks	National 1625 UBDE w/41.275 mm Drill Line Max. Line Pull 12 Lines of 782.7 mt
Rotary Table	NOV-495, 1.257 m Max. Opening
Tubular Handling	NOV st-120 Iron Roughneck
Mud Pumps	3 x LEWCO w-2214, 1641 kW
HP Mud System	Rated for 517 Bar
Shale Shakers	4 x Brandt VSM 300

### WELL CONTROL

BOP (LP)	Cameron Type U 53.975 cm x 52.705 cm 3 x RAM 138 Bar 1 x Shaffer Spherical Annular 53.975 cm 138 Bar
BOP (HP)	Cameron Type U 34.6075 cm 4 x RAM 1,034 Bar 1 x Shaffer Spherical Annular 34.6075 cm 689 Bar
Diverter	1 x Shaffer Spherical 76.20 cm 69 Bar
BOP Handling	2 x Ingersoll-Rand 75 mt Hoist
Choke & Kill Manifold	WOM 1,034 Bar
Conductor Tensioning	Claxton 4 x Lift Points Total Tension 200 mt

### CRANES

Primary Cranes	1 x LeTourneau PCM120ss 36.6 m Boom Rated for 37.8 mt at 7.6 m Radius, Port FWD 2 x LeTourneau PCM120ss 30.5 m Boom Rated for 44.6 mt at 6.7 m Radius, Port AFT, STBD AFT
Xmas Tree Handling	2 x Ingersoll-Rand 75 mt Hoist

### POWER

Main Engines	4 x Caterpillar 3516B HD 1,603 kW Diesel Engines
Main Generators	4 x Baylor 1,500 kW
Emergency Power	1 x Caterpillar 3516B HD 1,603 kW Diesel Engine (Separate From 4 Main Engines)

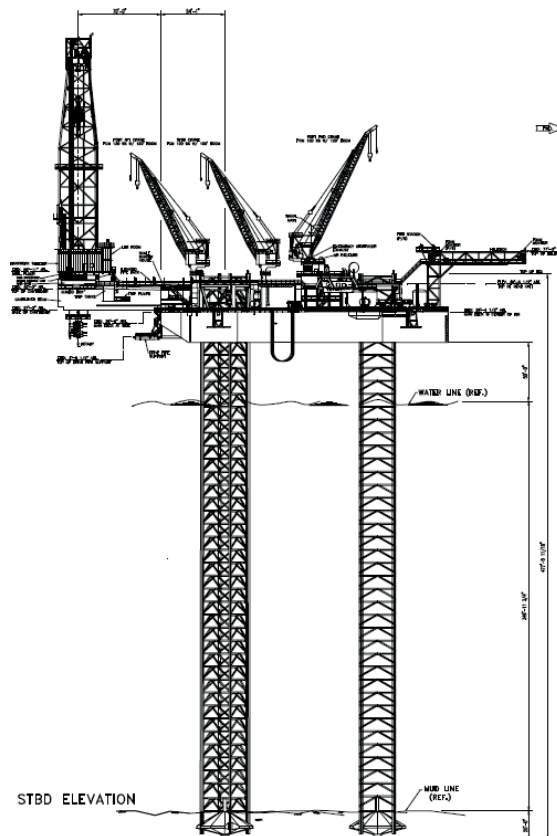
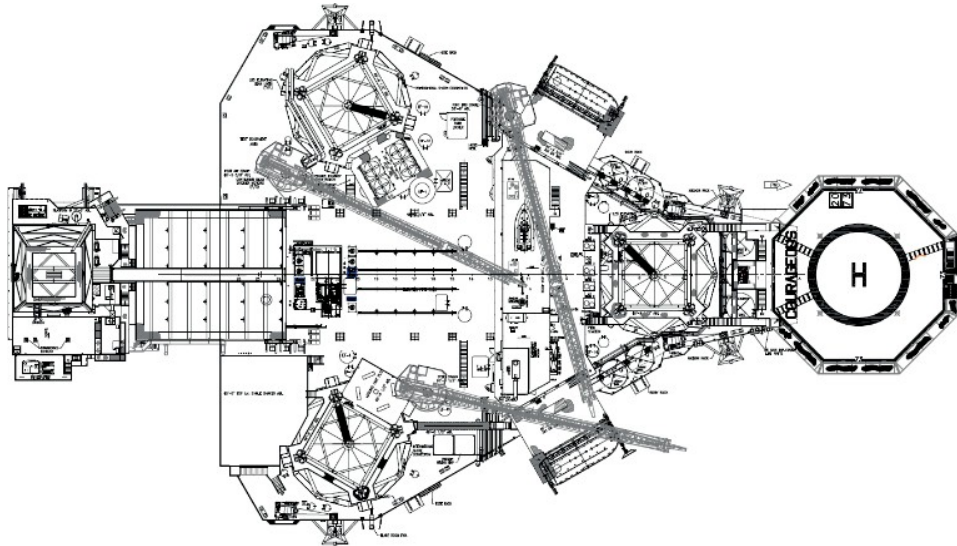
Further information: +47 51 30 90 00 – [www.seadrill.com](http://www.seadrill.com)

The above information is intended for general reference only. All equipment and specifications are subject to change at any time. Revised October 2018.



## West Courageous

The West Courageous is an independent Leg Cantilever Jackup with operational history in the Gulf of Mexico.



Further information: +47 51 30 90 00 – [www.seadrill.com](http://www.seadrill.com)

The above information is intended for general reference only. All equipment and specifications are subject to change at any time. Revised October 2018.