



West Polaris

The West Polaris is a 6th generation ultra-deepwater dual activity drillship with operational history in Brazil, India and West Africa.



GENERAL (U.S.)

Built	2008 Samsung, South Korea
Design	Samsung 10,000
Flag/Class	Panama / ABS
Dimensions	748 ft x 137 ft
Draft	27.9 ft (transit) 39.4 ft (operating)
Displacement	96,500 st (at loadline)
Variable Load	16,500 st (transit) 20,040 st (drilling)
Accommodations	200
Helideck	Boeing Chinook, 23.4 st
Max. Water Depth	10,000 ft design
Max. Drilling Depth	37,500 ft

STATION KEEPING

Dynamic Positioning	DPS-3
Thrusters	6 x Rolls Royce 6,000 hp
Transit Speed	Up to 11.5 kn
Mooring Lines	Harbour mooring only
Mooring Winches	Harbour mooring only

STORAGE CAPACITIES

Fuel	38,000 bbl
Drill Water	17,600 bbl
Potable Water	8,900 bbl
Active Liquid Mud	6,400 bbl
Reserve Liquid Mud	6,200 bbl
Bulk Bentonite / Barite	15,900 ft ³
Bulk Cement	15,900 ft ³

DRILLING PACKAGE

Derrick	2 x 1,000 st
Top Drive	2 x NOV HPS-3 1000 st
Drawworks	2 x NOV SSGD-1000 5,750hp 1,000st
Rotary Table	NOV RST 60.5 in
Compensator	NOV CMC-1000 1,000 st
Tubular Handling	2 x NOV Hydraracker IV
Mud Pumps	4 x NOV 14-P-220 2,200 hp
HP Mud System	7,500 psi
Shale Shakers	6 x NOV Brandt VSM 300

SUBSEA EQUIPMENT

BOP	NOV NXT 6 ram 15,000 psi 18-3/4 in
Annular	2 x NOV SBOP 10,000 psi 18-3/4 in
Diverter	NOV Shaffer 21-1/4 in
Wellhead Connector	Vetco SHD H4 18-3/4 in
Riser	NOV Shaffer FT-H 90 ft
MPD	Oil States / Halliburton
Tensioners	8 x NOV dual wire 1,600 st

CRANES

Primary Cranes	4 x NOV Hydralift 93.5 st
X-mas Tree Crane	Primary Crane

POWER

Main Engines	6 x Wartsila 9,775 hp
Main Generators	6 x ABB 9,200 hp
Emergency Power	1 x MTU 2,100 hp

Further information: [Seadrill.com](https://www.seadrill.com)

The above information is intended for general reference only. All equipment and specifications are subject to change at any time. Revised May 2025.

West Polaris

The West Polaris is a 6th generation ultra-deepwater dual activity drillship with operational history in Brazil, India and West Africa.



GENERAL (METRIC)

Built	2008 Samsung, South Korea
Design	Samsung 10,000
Flag/Class	Panama / ABS
Dimensions	228 m x 42 m
Draft	8.5 m (transit) 12 m (operating)
Displacement	87,700 mt (at loadline)
Variable Load	15,000 mt (transit) 18,200 mt (drilling)
Accommodations	200
Helideck	Boeing Chinook, 21.3 mT
Max. Water Depth	3,050 m design
Max. Drilling Depth	11,400 m

STATION KEEPING

Dynamic Positioning	DPS-3
Thrusters	6 x Rolls Royce 4,560 kW
Transit Speed	Up to 5.6 m/s
Mooring Lines	Harbour mooring only
Mooring Winches	Harbour mooring only

STORAGE CAPACITIES

Fuel	6,000 m ³
Drill Water	2,800 m ³
Potable Water	1,400 m ³
Active Liquid Mud	1,000 m ³
Reserve Liquid Mud	980 m ³
Bulk Bentonite / Barite	450 m ³
Bulk Cement	450 m ³

DRILLING PACKAGE

Derrick	2 x 907 mt
Top Drive	2 x NOV HPS-3 907 mt
Drawworks	2 x NOV SSGD-1000 4,370kW 907 mt
Rotary Table	NOV RST 1.5 m
Compensator	NOV CMC-1000 907 mt
Tubular Handling	2 x NOV Hydraracker IV
Mud Pumps	4 x NOV 14-P-220 1,640 kW
HP Mud System	517 bar
Shale Shakers	6 x NOV Brandt VSM 300

SUBSEA EQUIPMENT

BOP	NOV NXT 6 ram 1,034 bar 47.6 cm
Annular	2 x NOV SBOP 690 bar 47.6 cm
Diverter	NOV Shaffer 54 cm
Wellhead Connector	Vetco SHD H4 47.6 cm
Riser	NOV Shaffer FT-H 27.5 m
MPD	Oil States / Halliburton
Tensioners	8 x NOV dual wire 1,454 mt

CRANES

Primary Cranes	4 x NOV Hydralift 85 mt
X-mas Tree Crane	Primary Crane

POWER

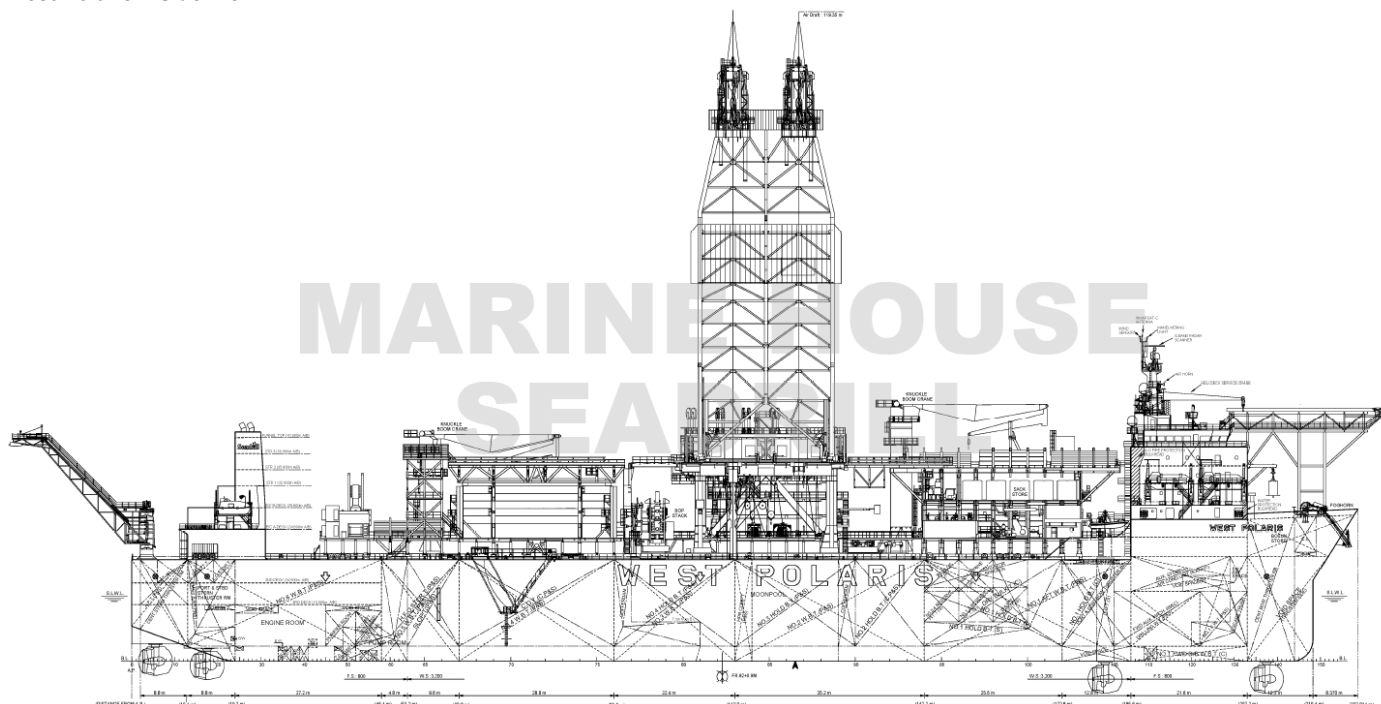
Main Engines	6 x Wartsila 7,500 kW
Main Generators	6 x ABB 6,900 kW
Emergency Power	1 x MTU 1,600 kW

West Polaris

The West Polaris is a 6th generation ultra-deepwater dual activity drillship with operational history in Brazil, India and West Africa.



West Polaris – Side View



West Polaris – Top View

